

# Schedule A

## Recommended general process for assessment of site contamination

In the current schedule, although the **risk-based approach** is emphasised in text, the flowchart (Schedule A) could be interpreted to encourage **remediation** to investigation or screening levels. The current Schedule A doesn't recognise the role of site management to manage site-specific risks.

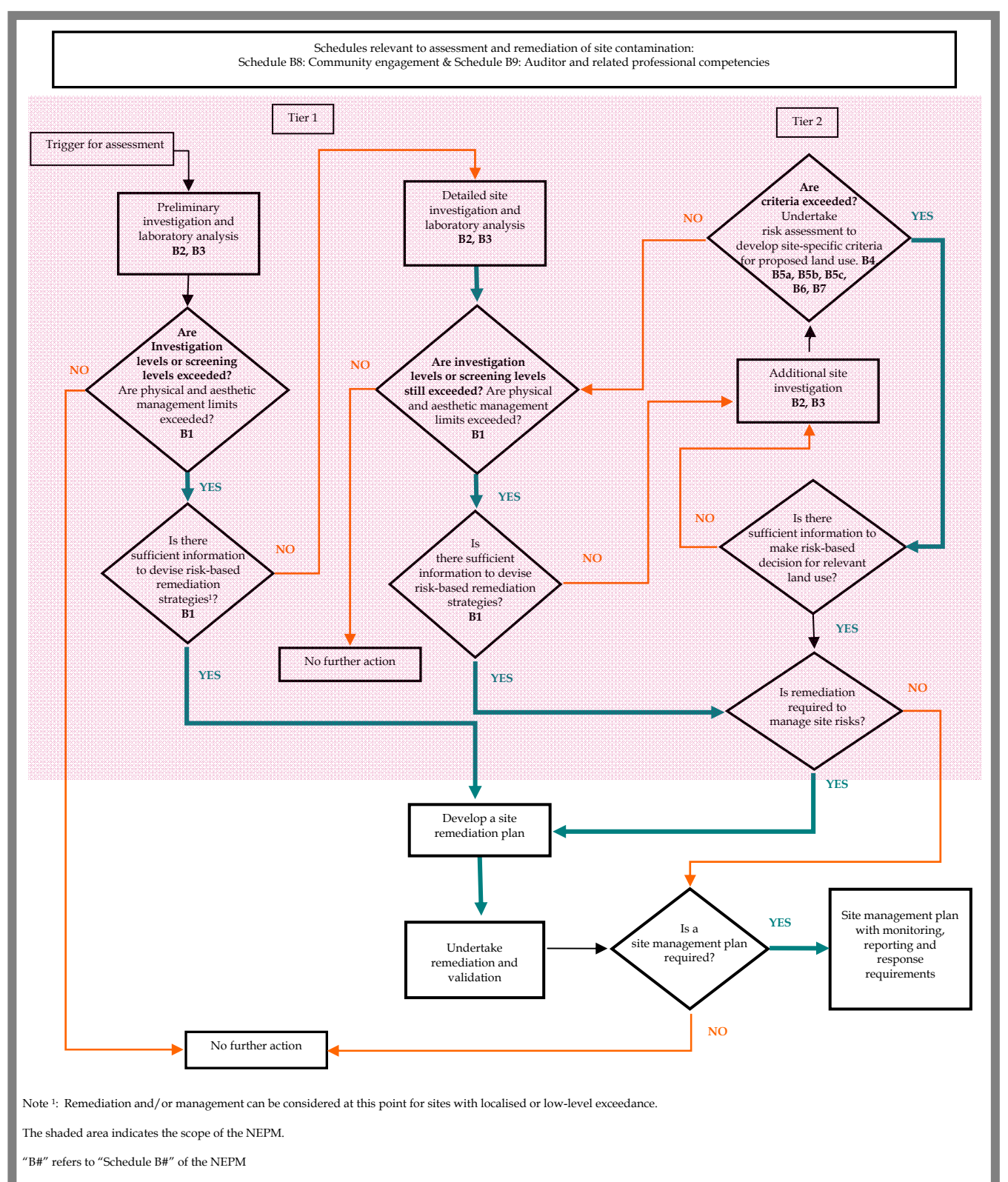
## The proposed new Schedule A

### Focusing on the decisions in the process

- The decision elements are specified more generally to indicate that practitioners are to consider the *multiple ways to reach a solution* to ensure the best outcome.

### Emphasis on site-specific risk assessment rather than remediation

- At the conclusion of the preliminary site investigation and comparison with investigation and screening levels, the process has been modified to emphasise the need to develop site-specific investigation levels based on the proposed land use.
- Where contamination is localised, it is possible to make the decision to remediate at this point. However, the emphasis is on appropriately considering the risks posed by the contamination in the specific site land-use setting prior to making any decision to remediate.



### Incorporation of site management

- The flow process also recognises the role that site management can play in managing site specific risks.